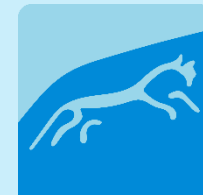


Annual Forum 2025

Your Landscape, Your Plan



**North Wessex
Downs**
National
Landscape



**North Wessex
Downs**
National
Landscape



Programme summary

- 10:10 **North Wessex Downs National Landscape: Progress Review**, Henry Oliver, Director, North Wessex Downs National Landscape
- 10:30 **Farming in Protected Landscapes**, Jemima Sellwood, Farming in Protected Landscapes Officer
- 10:45 **Partnerships for Nature (P4N)**, Tony Currivan, Project Coordinator and James Ingestre, Benham Estate Manager
- 11:10 **Mend the Gap**, Ruth Staples-Rolfe, Programme Manager
- 11:30 **Break**
- 12:00 **Landscape Character Assessment**, Rebecca Davies, Principal Landscape Planning Officer &
- 12:15 **Launch of the Management Plan, 2025-30**, Henry Oliver
- 12:30 **Quick fire talks from our Partners**
- 13:15 **Lunch**
- 14:15 **Afternoon exhibits**



North Wessex
Downs
National
Landscape



Progress Review 2019-2025



**North Wessex
Downs
National
Landscape**



**North Wessex
Downs
National
Landscape**



Planning

- 5,160 applications screened
- Commented on 2,070
- 65 pre-app responses
- 40 Neighbourhood Plans
- 39 appeal submissions
- 27 policy consultations



Colour Study



North Wessex
Downs
National
Landscape

Open Downland Survey summary and common colours



Wider engagement

- North Wessex Downs Landscape Trust
- 20 SDF projects
- Stonehenge and Avebury World Heritage Site
- Great West Way Designated Ambassador
- Farmer-led groups
- Local Nature Recovery Strategies
- South East and East Protected Landscapes
- National Landscapes Association



Big Chalk



North Wessex
Downs
National
Landscape



National profile



IUCN Green List

- Good Governance
- Sound Design and Planning
- Effective Management
- Successful Conservation Outcomes



The image shows the cover of the IUCN Green List of Protected and Conserved Areas: Standard, Version 1.1. The cover features the IUCN logo at the top left, followed by the title and subtitle. Below the text is a collage of four images: a person with traditional body paint, a river scene with people in a boat, a herd of elephants, and two dolphins. At the bottom, there are logos for IUCN, WCPA, and the Green List, along with text indicating support from the Federal Ministry for the Environment, Nature Conservation, Building and Nuclear Safety.

IUCN

IUCN Green List of Protected and Conserved Areas: Standard, Version 1.1

The global standard for protected areas in the 21st Century

Supported by:
Federal Ministry
for the Environment, Nature Conservation,
Building and Nuclear Safety

Based on a decision of the Contracting Parties

WCPA
WORLD COMMISSION
ON PROTECTED AREAS

Green List
Protected - Conserved Areas

Walking Festivals

3 Walking Festivals 2022, 2023,
2024

2024:

- 27 walks
- 49 volunteers and staff
- 24 partner organisations
- 92% enjoyed their walks 'a lot'



New website



North Wessex
Downs
National
Landscape



North Wessex
Downs
National
Landscape

[About Us](#)

[Landscape](#)

[Our Work](#)

[Visit & Explore](#)

[News & Blog](#)

[Resources](#)



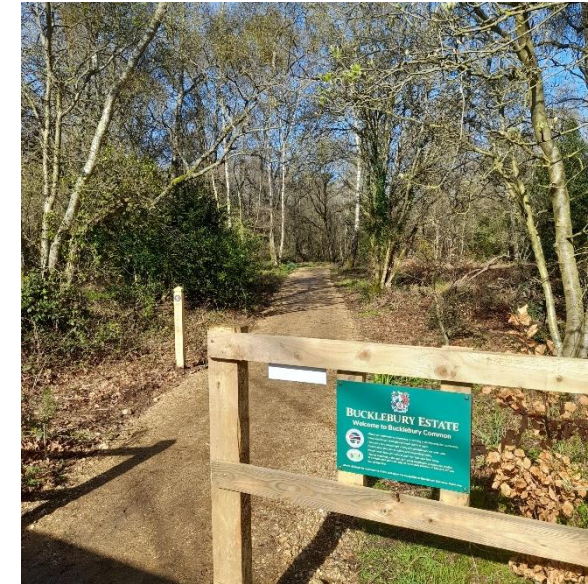
North Wessex Downs National Landscape

DISCOVER EXPLORE ENJOY



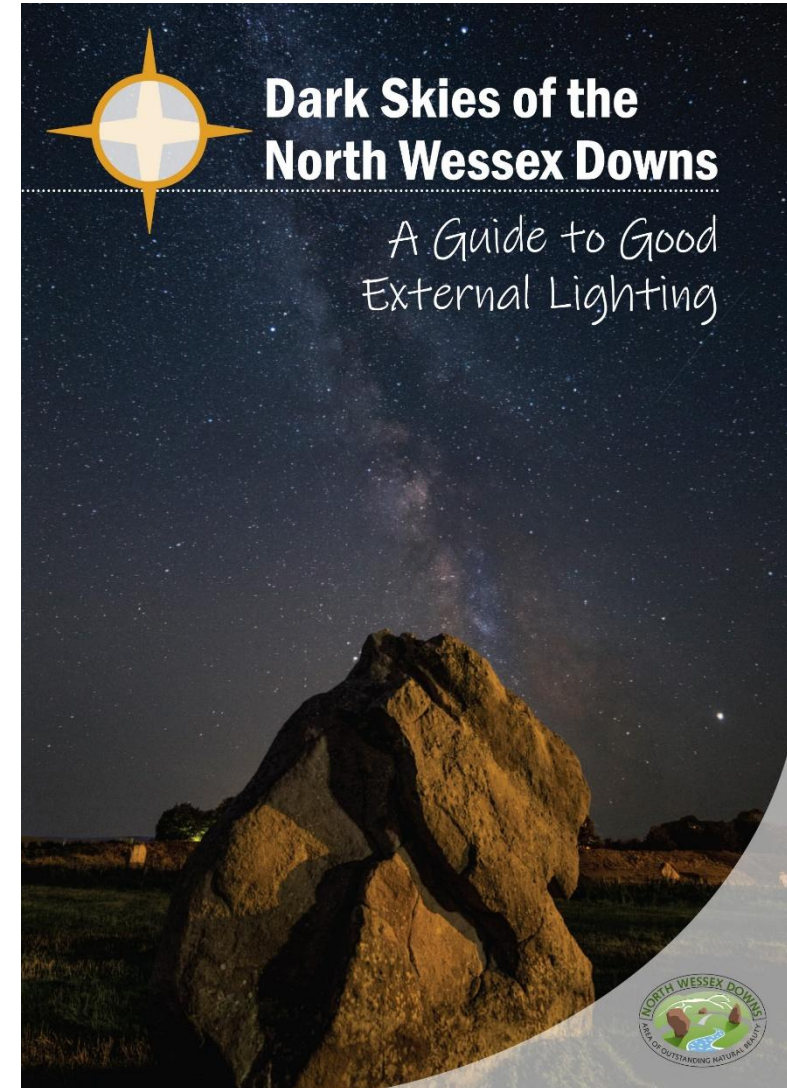
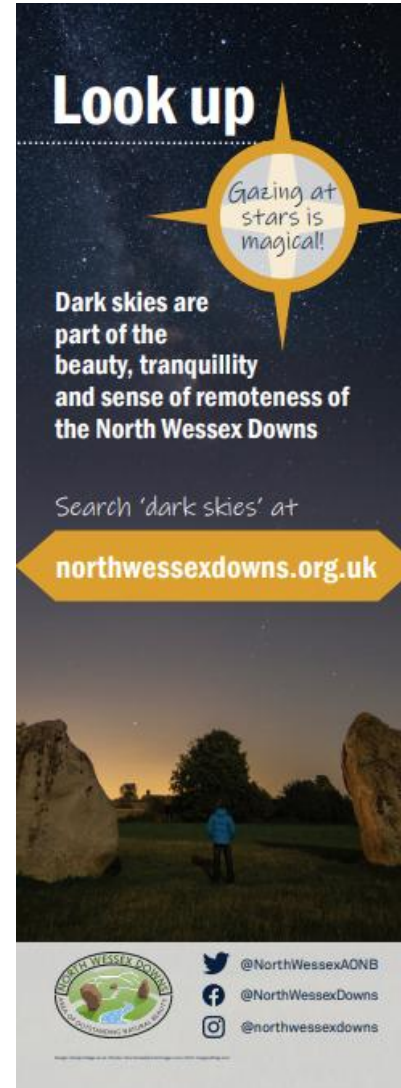
Access for All

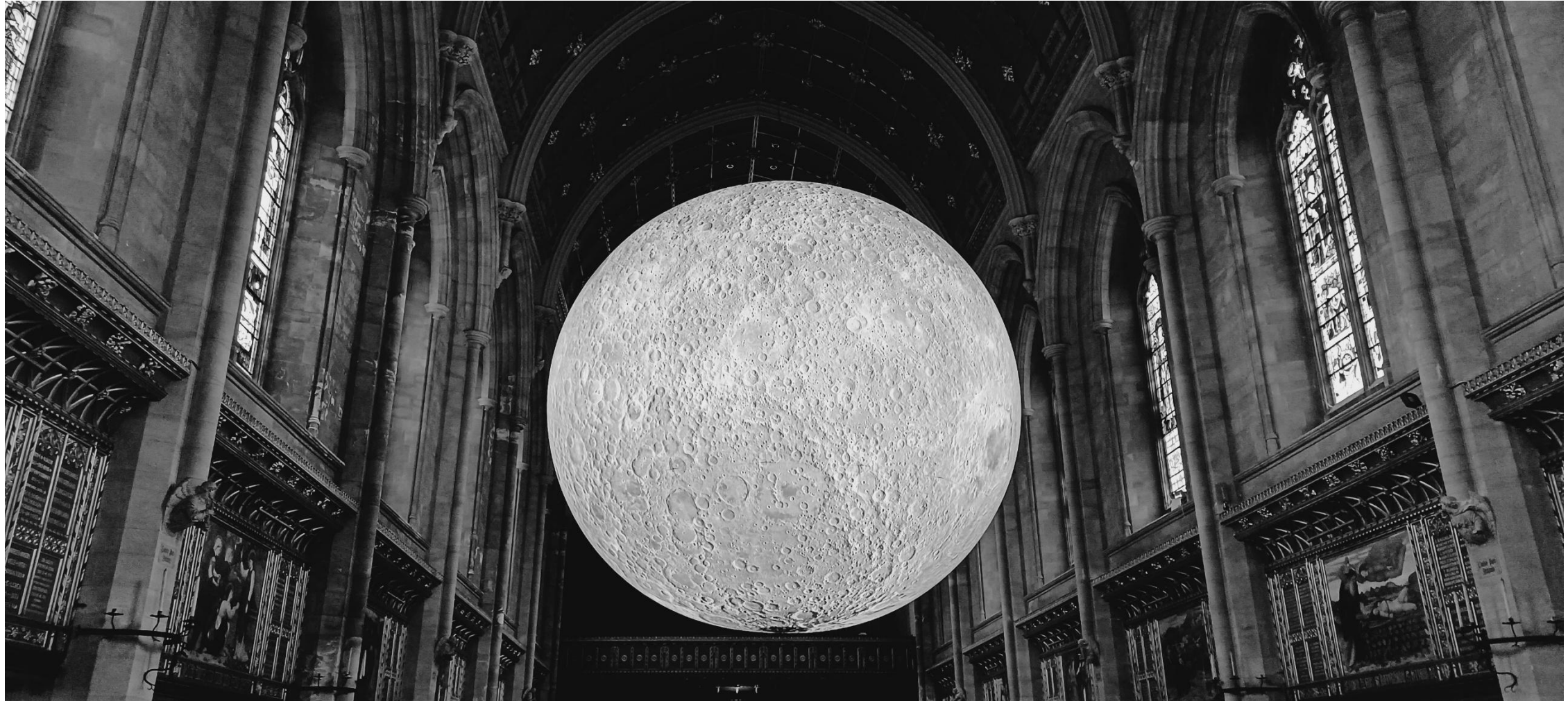
- National DEFRA programme
- 2022-3 and 2024-5
- £414,000 in capital grants
- Delivered 22 projects
- Across Berks, Hants, Wilts and Oxon



Dark skies

- Good Lighting Guide and leaflet
- Marlborough Dark Skies Festival “to inspire, amaze, and engage”: 34 events, 1,500 participants
- Local Plan policies
- SQM citizen science programme
- Q&A events with Marlborough Town Council





North Wessex
Downs
National
Landscape



Historic Ridgeway Project



North Wessex
Downs
National
Landscape



SEGSBURY CAMP

An Iron Age
Hillfort in
Oxfordshire

Key Stage 2
Education Pack



North Wessex
Downs
National
Landscape



THE RIDGEWAY
NATIONAL TRAIL



Sparkling Streams

- 8 sites on the Dun and Shalbourne
- 1.1 km new chalk stream and a fish pass
- 3 km in-river and riparian habitat
- 1 km hedge and 6 ha woodland on 6 sites
- 64 volunteer tasks held
- 145 people
- 1,600 hours
- 1 rain garden



Nature Recovery Plan

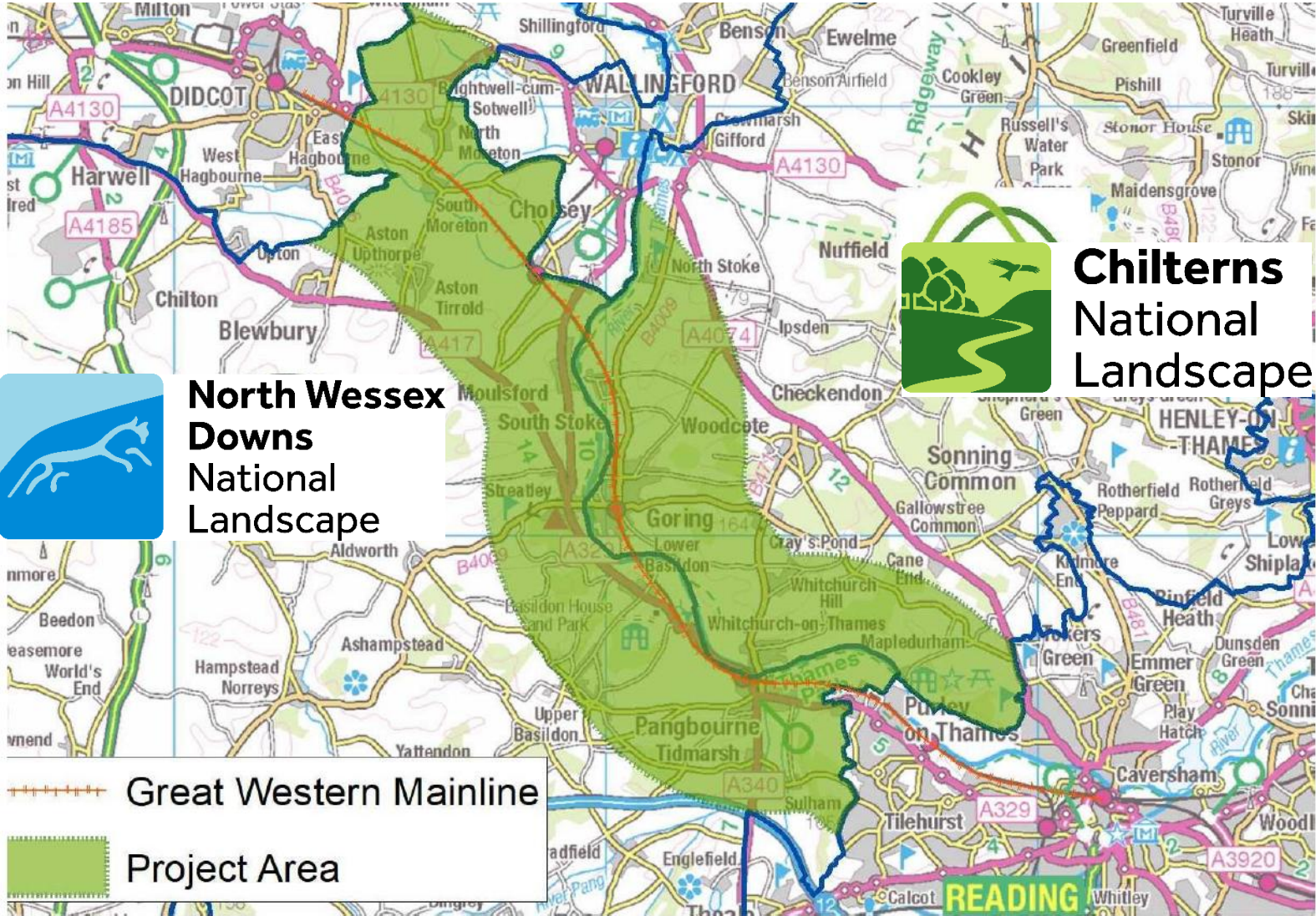
- Priority habitats
- Priority species
- 30by30 targets
- Climate change adaptation



Partnerships for Nature



Mend the Gap



**North Wessex
Downs
National
Landscape**



**Chilterns
National
Landscape**

Farming in Protected Landscapes programme



Department
for Environment
Food & Rural Affairs



**North Wessex
Downs**
National
Landscape

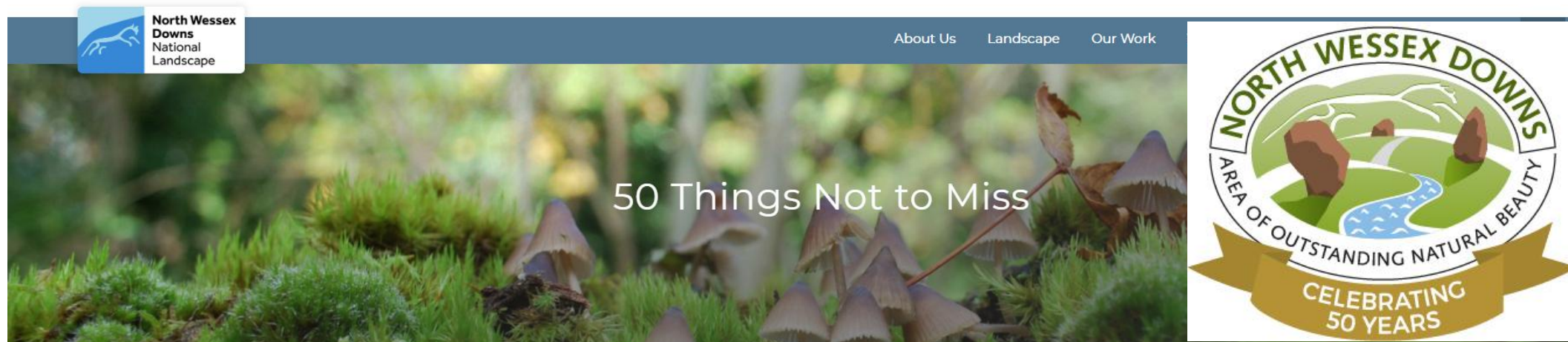
FARMING IN PROTECTED LANDSCAPES

Visual Impact Provision

- Bury 4.6km of overhead electricity line
- Remove 13 pylons
- Roundway Hill SSSI and Historic Battlefield
- Devizes Millennium White Horse



50th Anniversary



Celebrating 50 years as an Area of Outstanding Natural Beauty

The North Wessex Downs became a protected landscape in 1972 – protected by law for the nation. But for hundreds of years its natural beauty has inspired poets and painters, writers and wanderers. We hope to inspire you with our selection of fifty things that are not-to-be-missed: places, experiences and wildlife which we think deserve a special mention.

Thank you to everybody who contributed to the selection process – particularly to members of the [Council of Partners](#) for their input. Not everything made the cut – there is simply too much to choose from!

Please share your journey through the list via our social media channels using [#northwessexdowns50](#) – we'd love to see your images and know what you think about our choice.

What would you have included?

You can also explore the locations included in our list of 50 Things on our [Interactive Map](#).



National Landscapes rebranding



National
Landscapes
Association



North Wessex
Downs
National
Landscape



North Wessex Downs signs



North Wessex
Downs
National
Landscape



Value of benefits

2019-20

2023-24

From

£4.82

To

£22.46

per £1 local authority contribution

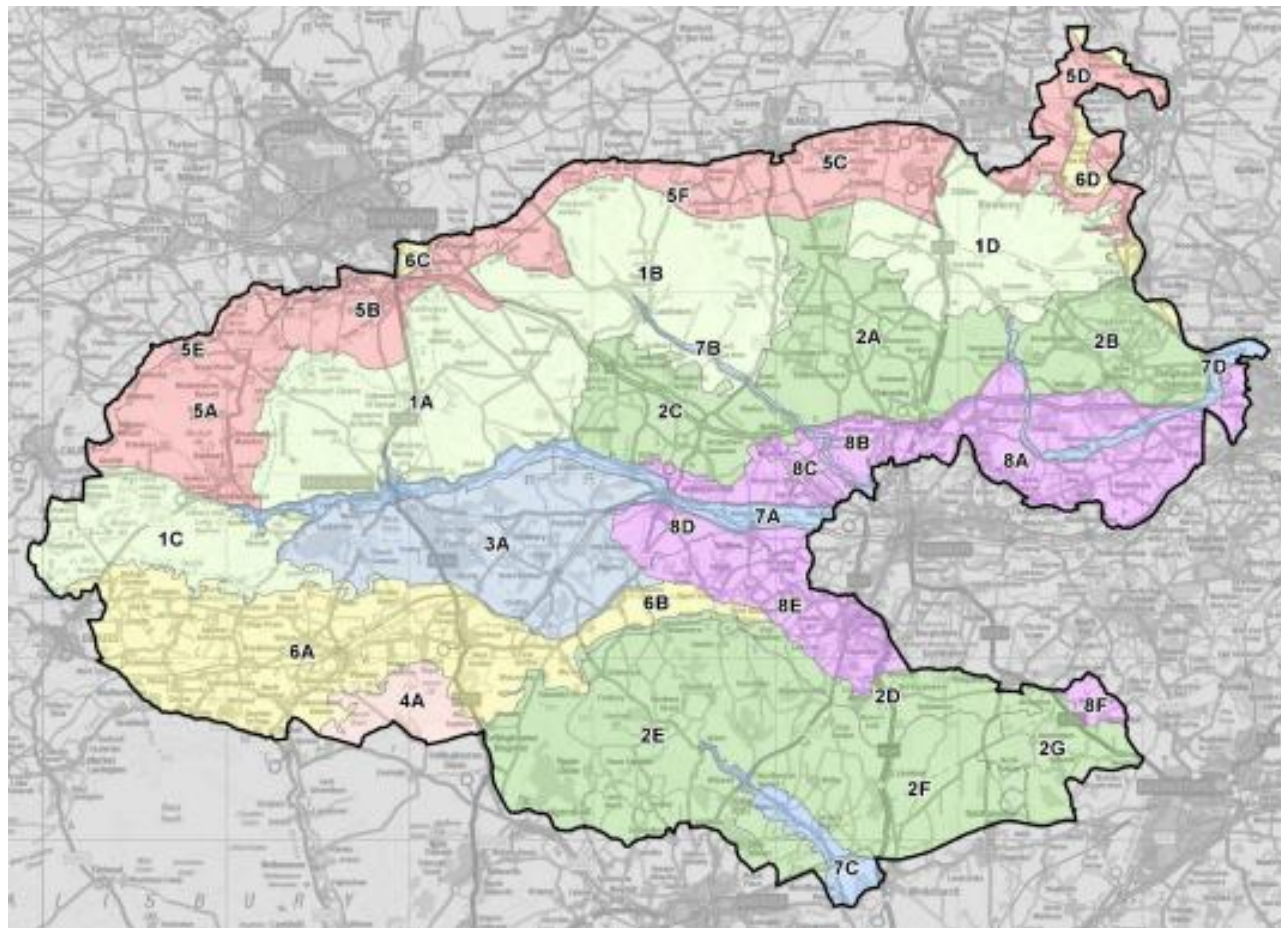
Staff:
from 6 (2019)
to 11 +2 (2025)

£9.3m in project
and grant funding



Landscape Character Assessment

- First review since 2002
- 8 Landscape Character Types
- 33 Landscape Character Areas



Duty of Regard

“In exercising or performing any functions in relation to, or so as to affect, land in an area of outstanding natural beauty in England, a relevant authority ... **must seek to further the purpose of conserving and enhancing the natural beauty** of the area of outstanding natural beauty.”

- s.85 of the *Countryside and Rights of Way Act 2000*, as amended by s.245 of the *Levelling Up and Regeneration Act 2023*



North Wessex Downs NATIONAL LANDSCAPE

An Area of Outstanding Natural Beauty Management Plan
2025 – 2030



Produced on behalf of the Council of Partners



North Wessex
Downs
National
Landscape

