

Two National Landscapes

Working collaboratively

Ruth Staples-Rolfe
Programme Manager



North Wessex
Downs
National
Landscape



Chilterns
National
Landscape



Where in the National Landscape?



Wallingford and Cholsey Brook

Thames river between Reading and Didcot

Chalk Escarpments of the Goring Gap

Pang and Sulham Brook



**North Wessex
Downs
National
Landscape**

**Mend the Gap - Berkshire Biodiversity Opportunity Areas and
Oxfordshire Conservation Target Areas**

- Blewbury to Streatley Downs
- Yattendon and Basildon Woodlands
- Lower Pang Valley and Sulham Stream
- West Reading Woodlands and LNRs
- Thames Wallingford to Goring
- Chilterns Escarpment South Central
- Chilterns Escarpment South
- Chilterns Dipslope and Plateau

What are we doing



Enhancement of
arable and
wetland habitats



Enhancement of
the chalk and
arable habitats

Access, Enjoyment and Understanding

Monitoring and evaluation



North Wessex
Downs
National
Landscape



Chilterns
National
Landscape



Why

Mend the Gap is enhancing areas of the Goring Gap in the Thames Valley that have been negatively impacted by the electrification of the Great Western Railway.



The programme is run jointly by the [Chilterns](#) and [North Wessex Downs](#) National Landscapes, with involvement from the Railway Action Group (a group derived from the local community to protest the design of the gantries used in the electrification)



North Wessex
Downs
National
Landscape



Chilterns
National
Landscape

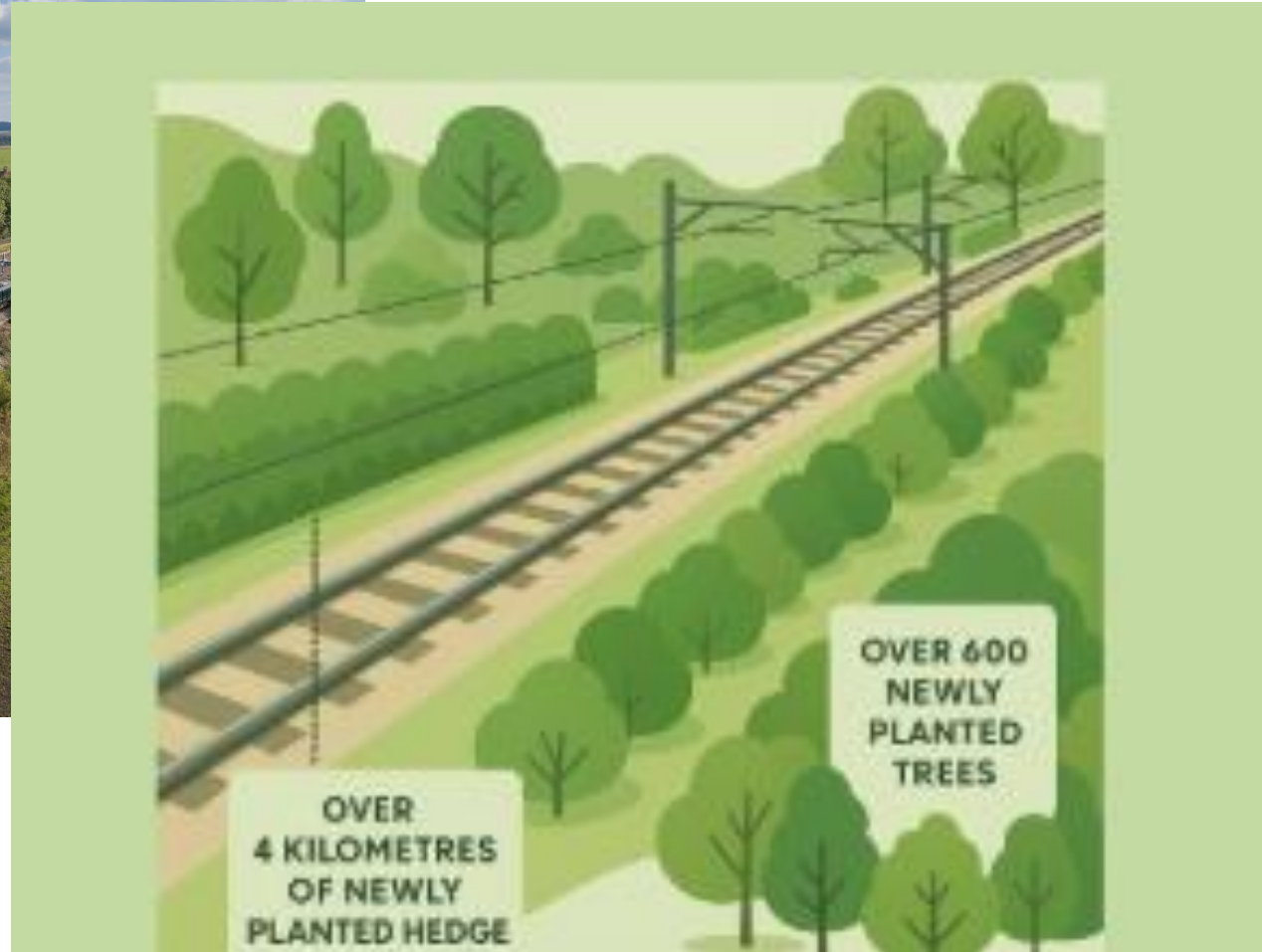


Mitigation planting



Credit: Dave Olinski

And now...



**North Wessex
Downs**
National
Landscape



Chilterns
National
Landscape



Enhancements with private and public landowners



Credit: Action for River kennet

Sulham Wetland



Credit: Dave Olinski

Rectory Farm



Credit: Simon Booker

Withymead Wetland



**North Wessex
Downs**
National
Landscape



Chilterns
National
Landscape



Enhancement support with BBOWT and Cholsey Marshes



**Berkshire
Buckinghamshire
& Oxfordshire**
Wildlife Trust



**North Wessex
Downs**
National
Landscape



Chilterns
National
Landscape



Enhancements with parish councils



Community art and
citizen science



Tree
planting



Gardening and
habitat
management



North Wessex
Downs
National
Landscape



Chilterns
National
Landscape



Schools – landscape literacy

Working with Learning through Landscapes to learn language young people can use to describe landscape and how they can enhance their landscape.

- Over **6000 children** benefiting from outcomes
- **8 Primary schools** with physical enhancement projects
- **4 Secondary Schools** with physical enhancements
- **11 whole school reports**
- 3 Secondary schools experiencing a day out on a **farm with rural craft and growing/food experiences**

Key points for primary schools were enhancing access to nature and farm to fork projects



Credit: Dave Olinski



North Wessex
Downs
National
Landscape



Chilterns
National
Landscape

